

Impact of Self-Assessment Process at University of the Punjab for the Improvement of Quality of Education: A Case Study



Presenter

Prof. Dr. Aamir Ijaz

Director, Quality Enhancement Cell,
University of the Punjab, Lahore, Pakistan

Presentation Contents



- ❧ Introduction
- ❧ Purpose of Study
- ❧ Quality Assurance in Higher Education of Pakistan
- ❧ Self-Assessment Process
- ❧ QEC at University of the Punjab
- ❧ Research Methodology
- ❧ Finding of Study
- ❧ Conclusion

Introduction



- ❧ Quality assurance refers to “systematic, structured and continuous attention to quality in terms of quality maintenance and improvement
- ❧ Quality assurance in higher education is crucial in a country’s strategic plans to enhance competitiveness and to meet international standards
- ❧ Self-Assessment is a process to assess yourself by yourself to maximize the performance

Continue.....



- ❧ Self-assessment is done through Quality Enhancement Cells under the guidelines of Higher Education Commission, Pakistan in Pakistani Universities, but no research was carried out for the effectiveness of this process
- ❧ In this research University of the Punjab is taken as a case study to know the impact of self-assessment process



Purpose of Study



- ❧ To study the impact of self-assessment process at University of the Punjab
- ❧ To investigate the effect of Teacher's evaluation for the improvement of quality of higher education at Punjab University
- ❧ Teachers, students and head of departments are involved in this study

Quality Assurance in Higher Education of Pakistan



- ❧ To ensure the quality education in Pakistani higher education institutes quality assurance agency (QA) was established in Higher Education Commission
- ❧ QA formed Quality Enhancement Cells in each public and private university across Pakistan for the purpose
- ❧ These cells are working under the guidelines of QA
- ❧ A significant improvement in higher education system is observed after the establishment of these cells

Self-Assessment



Self-Assessment Process



- ❧ The quality of academic departments of a university is checked through Self-Assessment Report (SAR) that is prepared by using Self-Assessment Manual (SAM) provided by HEC
- ❧ Following steps are involved in self-assessment process
- ❧ Department forms the Program Team (PT) that will be responsible for preparing Self-Assessment Report (SAR)
- ❧ SAR must contain, mission, objectives, course outline, facilities available, about faculty and expected outcomes of the program
- ❧ PT conducts Surveys for outcomes / Feedback

Continue....



- ❧ QEC reviews / ensure the documentation.
- ❧ Assessment Team (AT) forms in consultation of Director Campus & HODs. Rector approves final nomination.
- ❧ AT conducts assessment and presents its finding in 'EXIT MEETING'
- ❧ QEC / QA submit executive summary to the Rector
- ❧ QEC sends Implementation Plans to HODs
- ❧ Follow up the Implementation Plans by QEC

Self-Assessment Cycle



Self-assessment is a continuous and ongoing process



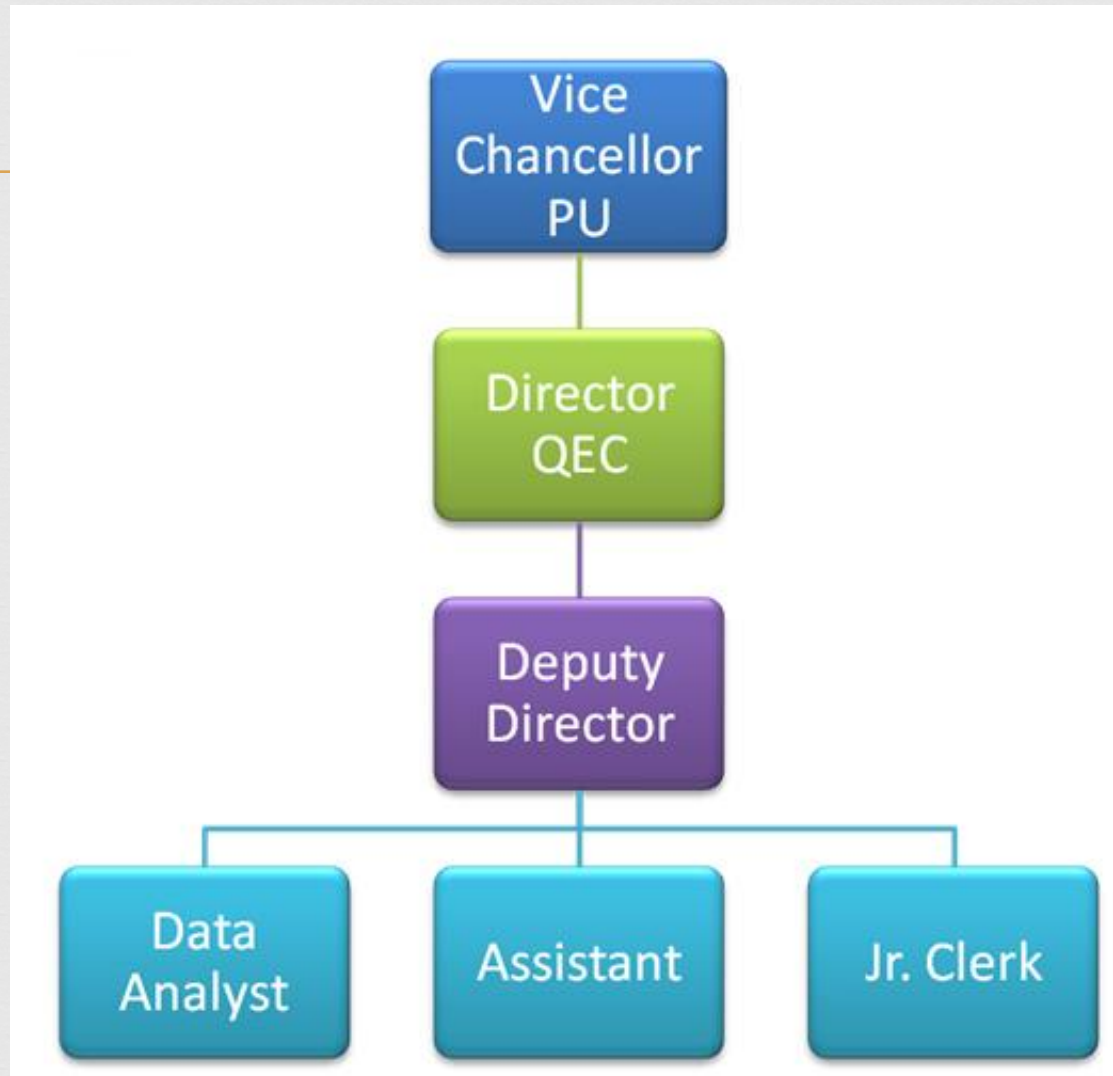
SUSTAINABLE DEVELOPMENT OF QUALITY ASSURANCE IN HIGHER EDUCATION

QEC at University of the Punjab



- ❧ QEC was established at University of the Punjab in 2006
- ❧ All the departments are now under the umbrella of QEC
- ❧ QEC is achieving all the targets set by QA,HEC and has been maintaining its place in “W” category (highest category) in annual HEC ranking

Organogram



SELF ASSESSMENT PROCEDURE

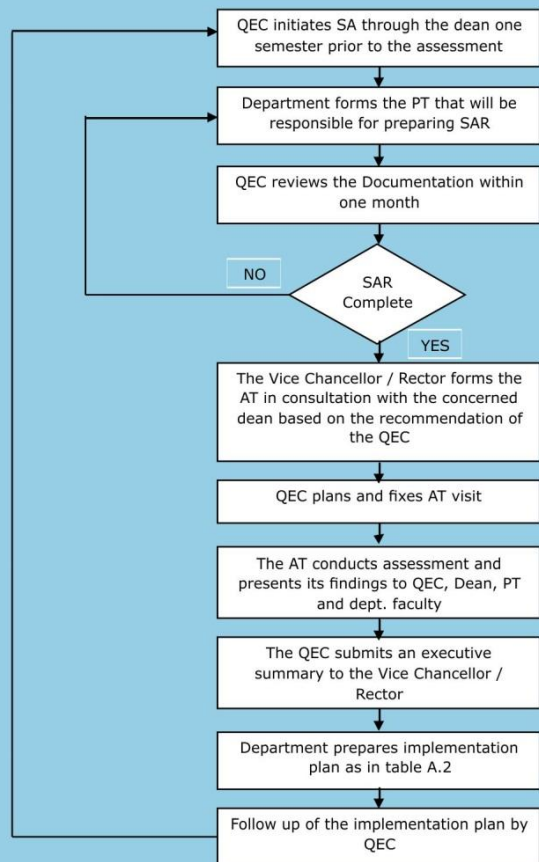
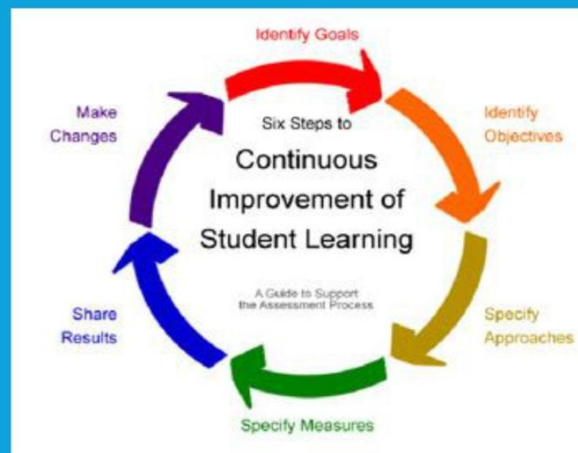


Figure – 1: Self Assessment Procedure

IMPACT OF SELF ASSESSMENT



QUALITY ENHANCEMENT CELL

First Floor, Institute of Chemical
Engineering & Technology, University of the
Punjab, Lahore.
Phone# 042-99237019
Email: director.qec@pu.edu.pk

Website

<http://pu.edu.pk/home/qec/qec.html>



QUALITY ENHANCEMENT CELL

*Focus
on
Quality*

UNIVERSITY OF THE PUNJAB
LAHORE-PAKISTAN

Research Methodology



Quantitative approach was used and feedback of teachers, students and HODs was taken.

Findings of Study



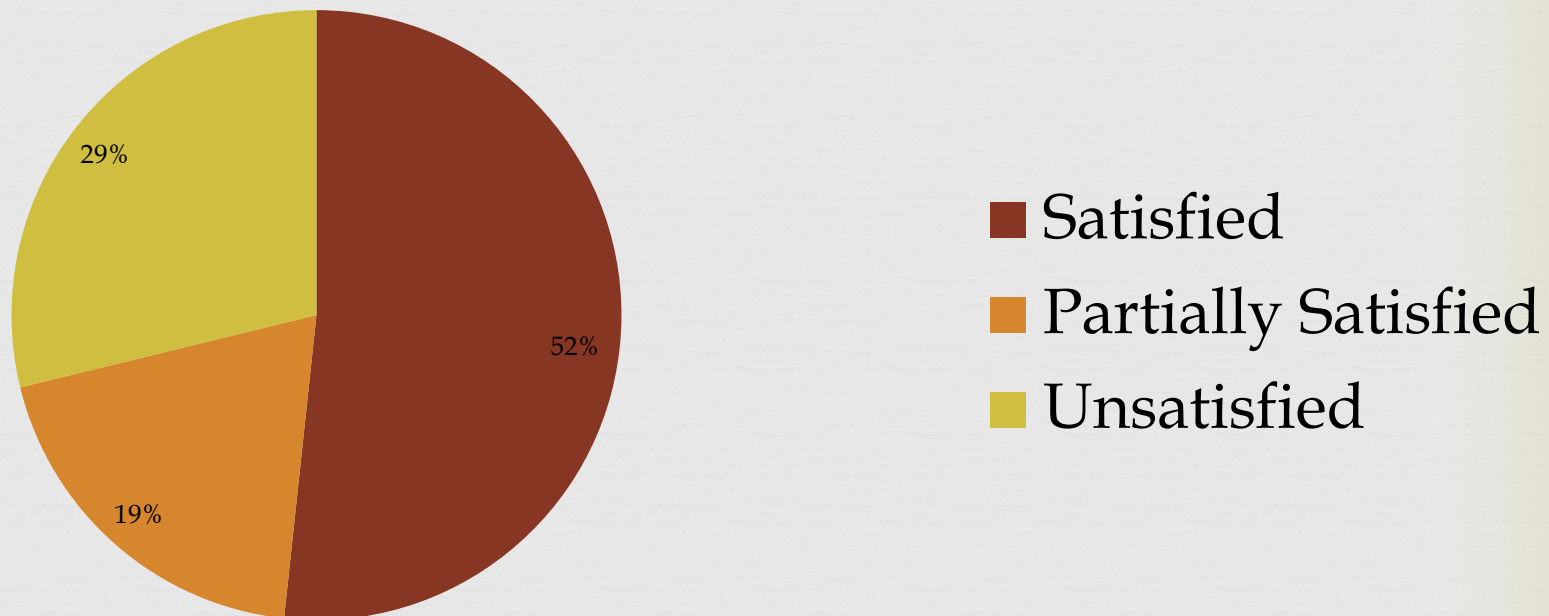
Self-Assessment Process

- ❧ 52% teachers are satisfied with self-assess procedure of HEC, Paksitan
- ❧ 19% are satisfied but want improvements in self-assessment procedure
- ❧ 29% do not find this process helpful for the improvement of quality of education in university

Continue...



Self-Assessment Process



Findings of Study



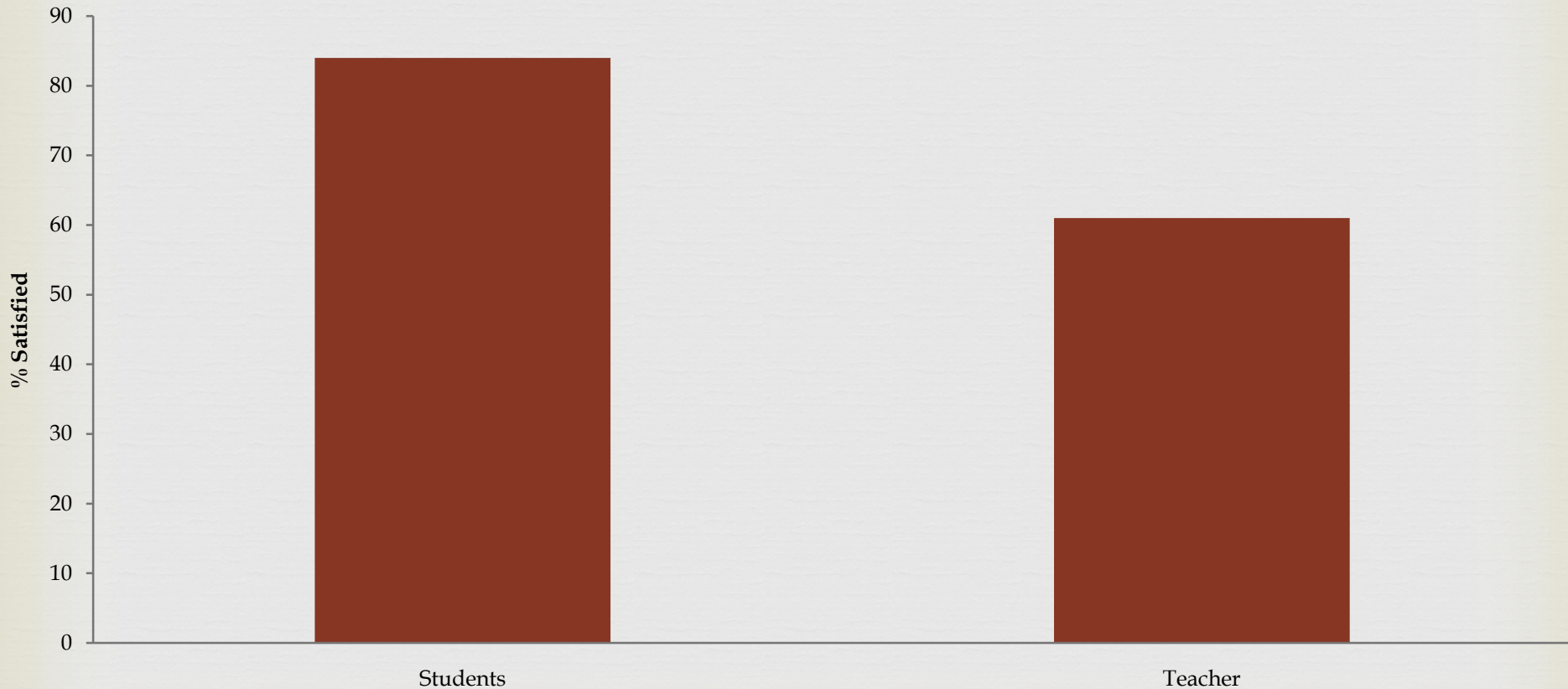
Teachers Evaluation

- ❧ 61% teachers are satisfied with this survey and finds it helpful in improving their grey areas
- ❧ 82% HODs are in the favor of this survey
- ❧ 48% teachers think that students show some kind of biasedness while filling up this survey
- ❧ 84% students want this survey to be conducted in their department

Continue...



Teacher Evaluation Survey



Conclusions



- ❧ Majority of students and teachers are in the favor of self –assessment process and teacher evaluation survey
- ❧ Some reservations are also there for these processes
- ❧ Self-assessment process should continue in universities to enhance the level of quality education in Pakistani universities

Thank You!

